

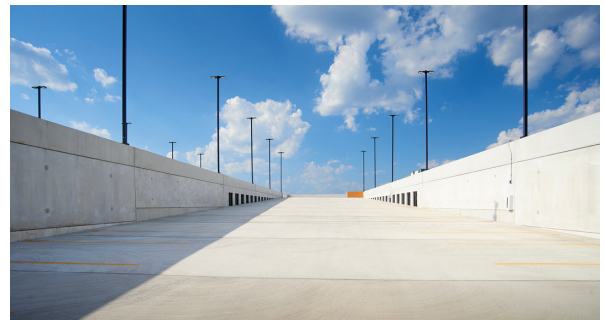
Spring Maintenance Checklist

Proactive Spring Maintenance with StructureCare

From snow to ice to wind, parking structures are subject to the worst conditions winter offers. As we move into warmer weather, now is the time to assess the winter damage your parking structure may have endured during the colder months so you can prioritize necessary maintenance and repairs.

Is Your Parking Structure Ready for the Spring?

As you move into the spring season, it's time to proactively identify winter damage. To help avoid repairs down the road take action on the 4 key aspects below:



- Inspect joints and surfaces for cracks, chips and other damage.
- Examine waterproofing coatings as well as roof-level and architectural sealants.
- Ensure drainage systems are cleared of debris and functioning properly.
- Power wash all horizontal floor surfaces of the garage to help maintain a clean, user-friendly environment, and minimize chloride contamination

Post-winter assessments are essential to a proactive maintenance program that helps lower costs, mitigate risk, and maximize your parking garage's life span.

Reach out to our StructureCare team of experts to support and address any concerns that arise while reviewing your parking structure after a long winter season.

[Contact our team today!](mailto:info@structurecareus.com)
info@structurecareus.com

